

T O W A R D S

2050 COMMUNITY PLAN

A CONNECTED, PROGRESSIVE, AND RESILIENT CITY



Ngadlurlu tampinhi, ngadlu Kurna
yartangka inparrinhi. Ngadlurlu parnuku
tuwila yartangka tampinhi.

Ngadlurlu Kurna Miyurna yaitya yarta
mathanya Wama Tarntanyaku tampinhi.

Parnuku yailtya, parnuku tapa
purruna yalarra puru purruna.

*Kurna Translation provided by
Kurna Warra Karrpanthi

We would like to
acknowledge this land is the
Traditional Lands for the Kurna people and that
we respect their spiritual relationship with their country.

We also acknowledge the Kurna people as the
Traditional Custodians of the Adelaide region and that
their cultural and heritage beliefs are still as important
to the living Kurna people today.

CONTENTS

MAYOR'S MESSAGE	4
OUR CITY	6
OUR COMMUNITY	8
OUR FUTURE	11
DEVELOPING THE COMMUNITY PLAN	12
OUR ROLE	14
OUR GUIDING PRINCIPLES	16
OUR VISION	18
COMMUNITY PLAN SUMMARY	20
COMMUNITY	22
ENVIRONMENT	24
ECONOMY	26
PLACES AND SPACES	28
OUR STRATEGIC MANAGEMENT FRAMEWORK	30



MAYOR'S MESSAGE

It is an honour to introduce 'Towards 2050', the City of Unley's Community Plan.

This Plan sets a bold course for our City and community, inspired by both the things we cherish about our past, and our collective aspirations for the future.

Our vision is to be a connected, progressive, and resilient City. In 2050, the City of Unley will be a place where our people and environment are thriving, opportunities and excitement abound, and our sense of community is stronger than ever.

To achieve our vision, we will need courageous leadership and bold action to prepare for the changes that will challenge and invigorate us over the next decades. We are committed to creating a dynamic City that embraces new ideas, prioritises sustainability, and enhances our quality of life. We will be a leader in responding to climate change, we will support a growing population, and we will enhance the wellbeing and prosperity of our community.

With the support and engagement of our community, we can make our vision a reality.

The City of Unley will continue working hard over the coming years to deliver on the long-term goals and objectives set out in this Plan. As a transparent and accountable Council, we will continue our practice of setting measures and targets that keep us focused on our priorities and enable our community to track our progress.

The journey towards 2050 will require collaboration and commitment from all of us. With the support and engagement of our community, we can make our vision a reality. Let's embark on this exciting journey together and make our City an even better place, and a great community to belong to.

I would like to extend a special thanks to everyone who has contributed to the development of our Community Plan. The ideas you have shared with us, through our formal consultations and our everyday interactions, have empowered us to set an ambitious and exciting course for our City and community.

We look forward to working with you to develop and deliver the actions that will guide us towards this shared vision for the future.

Michael Hewitson AM
Mayor



OUR CITY

Located on Traditional Lands of the Kurna people, the City of Unley is a local government entity in the inner metropolitan Adelaide region, immediately south of the Adelaide city centre, and bounded by Greenhill Road in the north, Glen Osmond Road in the east, Cross Road in the south and South Road and Anzac Highway in the west.

Its winding creeks lined with Red Gum trees, shrubs and native grasses provided a rich array of foods, shelter, and water for Kurna people, who managed, shaped and cared for this country, over thousands of years.

First subdivided by early colonists in 1840, small villages sprung up alongside orchards, vineyards, and dairies. Later incorporated in 1871 as the City of Unley, the area is one of Adelaide's longest established local governments, and is known for its history, character, and atmosphere. Well laid out suburbs, leafy green streets, business, shopping and restaurant precincts, quality schools and a strong and flourishing community life make it a desirable place to work, visit or call home.

As a local government authority, we work closely with residents, businesses, and community groups to shape our City's future, striving to create a connected, progressive, and resilient City with a high quality of life and opportunities for everyone. We proudly maintain and improve our built and natural environment; offer a broad range of programs, services, activities, and facilities; create opportunities to participate in community life; and build the capacity of local traders, groups, and organisations.



THIS IS A PLAN FOR OUR CITY HEADING TOWARDS 2050.

Our City is the sum of everything that makes us Unley:

- Our creeks, waterways, open space, trees, and wildlife.
- Our history, heritage, and character.
- Our built form.
- Our business, shopping, and dining precincts.
- Our inner-city cosmopolitan lifestyle.
- Our tree-lined streets, parks, playgrounds, and other public realm.
- Our cultural and social facilities.
- Our events, festivals, and lifestyle.
- Our accessible walking and cycling network.
- Our strong sense of community and social capital.

We work closely with residents, businesses, and community groups to shape our City's future.

14
square kilometres

16
suburbs

2,799
people per square kilometre

170
kilometres of streets and laneways

30
hectares of open space

25%
tree canopy

361
buildings of heritage value

16,579
rateable properties

5,800
businesses



OUR COMMUNITY

Our City is home to almost 40,000 residents and many more people who work, own property, study, visit, shop, recreate, travel or volunteer here. With the redevelopment of some key sites over the coming years, it is estimated that an additional 10,000 people will reside in our City by 2050.

Almost three-quarters of our community have lived here for at least five years – and for many, our City is where they have grown up, raised families, and retired.

The average age of our population is increasing, but we are firmly a City for all generations. Around 60% of our population is of working age, almost 20% are children or young people, and the remainder have finished their working lives.

Almost 60% of residents live with a partner or partner and children, and 30% live alone.

72% of residents were born in Australia, including 194 First Nations people. Over time we are becoming more culturally diverse and the countries we have come from are changing. People born overseas are mostly from the United Kingdom, China, and India. The proportion of people born in Greece and Italy has decreased – and most of this group are now over 65.

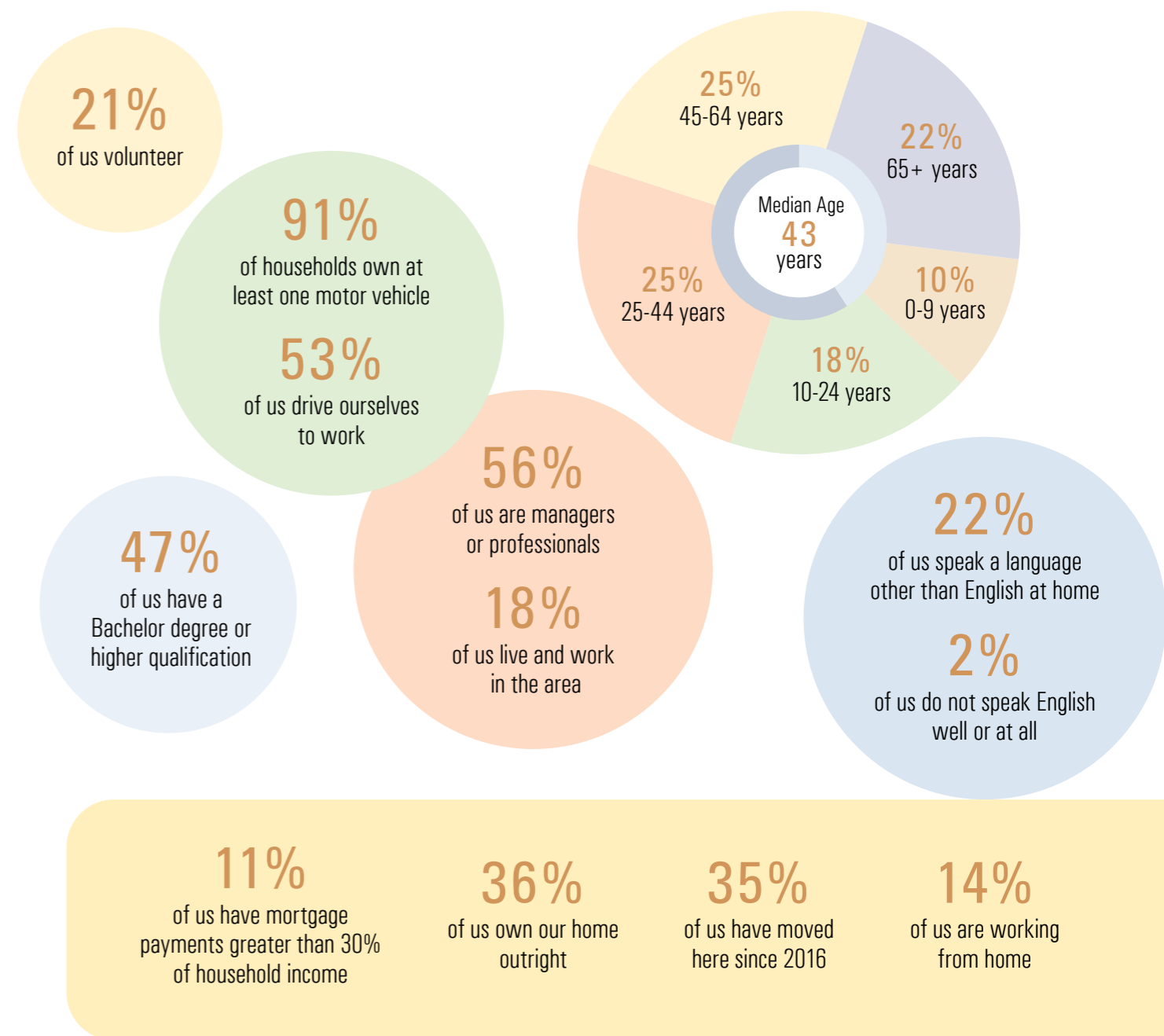
Around 60% of people live in a stand-alone house. Medium and high-density housing accounts for the remainder, with higher density housing more common over the past 10 years.

THIS IS A PLAN FOR OUR COMMUNITY.

Our community, in all its diversity, stories and strengths, is everyone who shares a connection with our City.

It includes our:

- Residents at every age and stage of life.
- People of all cultures and backgrounds, including First Nations peoples.
- Ratepayers, businesses, service providers and workers.
- Volunteers, visitors, shoppers, diners, artists, and event goers.
- Community, education, health, cultural and faith-based organisations, clubs, and groups.
- Government and non-government agencies and partners.





OUR FUTURE

BY 2050 WE CAN EXPECT:

- Australia's population to have reached 40 million people, putting added stress on our cities and environment.
- The number of older people (65 to 84 years) will more than double, intensifying pressure on the health system and reducing the ratio of workers to retirees and young dependents. As the proportion of working-age people declines, there will be fewer people available to support those aged 65 and over. This demographic shift will strain economic growth, which underpins living standards.
- There will be greater demands for publicly funded social services and a reduced ability to meet these challenges. More funding will be directed to health, age-related pensions, and aged care. Growing our population will help address these things, but it will also put pressures on our infrastructure and services.
- We will be a more culturally diverse country, and this will bring both challenges and opportunities.
- While global efforts to reduce carbon emissions and limit warming to 1.5°C above pre-industrial levels will be continuing, our climate will be different. This will create new risks but also generate new industries and economic opportunities.
- The creation of cities that are productive, liveable, and sustainable due to a focus for several decades on strategic planning systems addressing housing affordability, urban congestion, and the impacts of climate change.
- Access to digital infrastructure that meets our demand for information, services and support will be critical to our way of life.
- Education and training will play a key role in our future prosperity and standard of living. A highly educated and skilled workforce will be required to support innovation, technological advances, and economic growth.
- Artificial intelligence and machine learning will be among the biggest innovations to transform our way of life. Computing systems will work alongside people to perform services and make decisions.
- Multi-modal transport will look different. Autonomous cars, drone taxis, electric scooters and other forms of micro-transport will ferry people to where they need to be.

To respond to this locally, we will plan for diverse housing stock, social infrastructure, local community groups and support services. People will need to do more for each other and themselves using technology and the support of others. Our Age Friendly City status will help us navigate these changes.



DEVELOPING THE COMMUNITY PLAN

To develop this Plan, we asked our community what is important to them and what their priorities are for the future of our City.

We heard from young people, older people, families, businesses, community group members, visitors, and others with a connection to our City. We also looked at data to understand what is changing in our City, and reviewed regional, state, and national strategies to consider how the City of Unley can contribute to broader government objectives.

The long-term aspirations expressed in this Community Plan will guide the development of detailed actions plans and ambitious targets for achieving our strategic goals. Throughout the Plan, we have set signals about what we want to measure and report on in our next level of detailed planning.

To measure our impact, we will need to develop new ways of capturing data about how our community uses and experiences the services and facilities offered in our City. This work will be ongoing over the coming years and will be informed by the targets and measures that flow to Councils from State Government plans and strategies, such as the Greater Adelaide Region Plan.

This is a snapshot of what our community and stakeholders told us is important to them now and into the future.

A GREEN CITY

Expanding the City's urban forest and enhancing our green open spaces and biodiversity.

A WELL-PLANNED CITY

Diverse housing options, sustainable development practices, and preservation of heritage buildings and character homes.

A PROSPEROUS CITY

Being an easy place to do business that attracts investment and supports a strong local economy.

AN INCLUSIVE COMMUNITY

A welcoming, vibrant, inclusive community that values all residents.

A CONNECTED COMMUNITY

Providing community spaces, parks, recreational facilities, and events that bring people together.

A WELL-MAINTAINED CITY

Ensuring footpaths, streets, public spaces, and buildings are kept in good condition.

A LIVEABLE CITY

A highly desirable, accessible, and safe area filled with cultural and creative experiences and convenient access to amenities, shopping, services, and open space.

A CLIMATE RESILIENT CITY

Unley as a leader in environmental policies, reducing emissions and driving local action on climate change.

AN ACCESSIBLE CITY

Ensuring safe, easy access via active and public transport and micro-mobility and managing motor vehicle traffic and parking.

These priorities have helped us develop a Community Plan which provides:

1 CITY VISION

Describing what we want the City of Unley to be known for by 2050.

4 THEMES AND GOALS

Outlining the key outcomes that will contribute to achieving our vision.

20 OBJECTIVES

Guiding what we will focus on to achieve our goals.

OUR ROLE

In developing our Community Plan, we have considered our various roles and the opportunities we have as a Council operating under the *Local Government Act 1999* to implement and influence change for our City and our community.

These different roles are reflected in our Goals and Objectives.



SERVICE PROVIDER

We provide a service directly to the community. Some we are required to provide under legislation and others we choose to provide to meet a local need.

POLICY MAKER

We create and implement plans, ideas and solutions on local issues that are within our scope of control and influence.

PARTNER

We work with others to partly fund or jointly administer the delivery of a service, program, or activity.

ADVOCATE

We speak on behalf of our community and stakeholders to another government or organisation seeking change that will benefit our City and our community.

AGENT

We receive funding to deliver services on behalf of a third party- typically services that are the responsibility of Federal or State Government.

FACILITATOR

We bring parties together to find a solution to an issue affecting our City.

OWNER / CUSTODIAN

We manage community land and assets entrusted to Council and have responsibility for capital, maintenance, and operating costs.

ADMINISTRATOR

We manage our finances and decision-making processes and comply with legislated governance and reporting requirements.

REGULATOR

We have legislated roles in a range of areas to keep the City safe, clean, and orderly.

We recognise that we do not work alone in making our City a great place, and that we need to collaborate with individuals and groups within our community to help achieve the shared goals set out in this plan.

OUR GUIDING PRINCIPLES

This Community Plan sets out our long-term vision and aspirations for what we want to achieve for and with our community and stakeholders as we head *Towards 2050*.

However, there are some things that everyone should always be able to expect from us as a transparent and accountable local government.

These are the Guiding Principles that we will apply today to make the best decisions for tomorrow.

INTEGRITY

By prioritising integrity, we foster trust, encourage community participation, provide open and transparent decision-making, and ensure that long-term goals align with the best interests of residents.

ENGAGEMENT

By encouraging diverse views and perspectives, we effectively engage our community, building stronger connections, fostering trust, and empowering them to have a real influence on the future of their city.

FINANCIALLY SUSTAINABLE

By being financially sustainable, we support community aspirations, deliver essential services, and invest, without imposing undue financial burdens on future generations.

THOUGHT LEADERSHIP

Through leadership, we are a beacon of innovation and progressive governance, welcoming new ideas, setting benchmarks for excellence, and fostering an environment of continuous improvement.



OUR VISION

A CONNECTED, PROGRESSIVE, AND RESILIENT CITY

CONNECTED

Our City is thriving because our community has so many ways to connect. It is easy for all people to travel across the City and experience all that Unley life has to offer. Neighbourhoods connect seamlessly with multi-modal transport options, businesses, education, shopping, dining, and services. Our green open spaces, and community and sporting facilities are places where people come together to learn, celebrate, participate, and recreate. Everyone feels welcome, safe, and included.

PROGRESSIVE

We embrace big ideas, lead by example, and shape our own future. We seek new and innovative ways to serve our community, enhance our environment and grow our economy. We are bold and courageous, take on challenges and make decisions that will benefit our City and community for future generations.

RESILIENT

We prepare for future challenges and opportunities that benefit our City. We are responsible custodians and take the necessary steps to protect our City, community, and assets from an increasing harsher climate. We stand together as a strong and united community that trusts and supports one another. As our community changes, we will change with it by being flexible and responsive in the services, supports, and opportunities we deliver.

We embrace big ideas, lead by example, and shape our own future.

COMMUNITY PLAN SUMMARY

THEMES

COMMUNITY

Welcoming, Safe, and Inclusive

GOAL 1

Our City offers an excellent quality of life and supports all people to thrive.

OBJECTIVES

- 1 We foster a community where all people can feel safe, welcomed, and included.
- 2 We embrace and celebrate the history, heritage and identity of our people, places, and Country.
- 3 We support and encourage all people to be healthy, active, and socially connected.
- 4 We support creativity, cultural expression, and learning.
- 5 We foster meaningful opportunities for people to participate in community and civic life.

ENVIRONMENT

Green and Sustainable

GOAL 2

Our City is a progressive and innovative leader in sustainability and climate resilience.

OBJECTIVES

- 1 We lead by example and innovate to grow our urban forest and make our City greener, cooler, and more biodiverse.
- 2 We lead, promote, and incentivise local action on a carbon neutral and climate resilient future.
- 3 We maximise sustainable resource recovery and advance a circular economy through innovation and new technology.
- 4 We seek nature-positive outcomes in the management of our natural resources.
- 5 We partner, facilitate and advocate to overcome constraints and achieve our environmental ambitions.

ECONOMY

Innovative and Prosperous

GOAL 3

Our City is a unique and vibrant destination that attracts and retains a diverse mix of businesses, industries, and opportunities.

OBJECTIVES

- 1 We model and enable innovation and entrepreneurship to grow our economy, create jobs and serve our community.
- 2 We generate vibrancy and economic vitality by activating and connecting thriving business precincts and innovation hubs throughout our City.
- 3 We enhance and promote the local characteristics within our City that make us a desirable and exciting place to live, work, visit, invest and do business.
- 4 We create partnerships, collaborate with others, and embrace new ideas to attract investment and enrich our City.
- 5 We drive strong economic, cultural, environmental, and social outcomes through strategic investments in property, technology, facilities, and infrastructure.

PLACES AND SPACES

Connected, Accessible and Vibrant

GOAL 4

Our City is well-planned and has great places and spaces that are designed, built, maintained, and activated to create a connected and vibrant community.

OBJECTIVES

- 1 We invest in, revitalise, and expand our open spaces, recreation facilities and infrastructure to meet the needs of current and future communities and climates.
- 2 We create and activate welcoming public spaces for all people to deliver memorable experiences that inspire connection, foster a strong sense of place, and strengthen our City's identity whilst enhancing its unique brand.
- 3 We design our streets with people in mind to increase accessibility, active transport, and multi-modal transport options.
- 4 We plan for future population growth with a City Masterplan that guides innovative and well-designed development in the right places.
- 5 We amplify the voice of our community by advocating for policies, partnerships, and funding that will enhance, future proof and attract investment in our places and spaces.



VISION

A CONNECTED, PROGRESSIVE,
AND RESILIENT CITY.



COMMUNITY

WELCOMING, SAFE, AND INCLUSIVE

Our community is at the centre of all that we do, and we create an environment where our community thrives, and all people enjoy an excellent quality of life.

Our cultural facilities are contemporary, fit-for-purpose, attract visitors, and provide opportunities for learning, creativity, and connection. They are venues for art, performance, exhibitions, and activities that encourage learning, sharing, and new experiences.

Our sporting, recreation, and open spaces provide ample opportunities for healthy, active lifestyles.

The rich heritage of our First Nations peoples, together with those from countries around the globe is reflected in our food, art, enterprise, traditions, and celebrations. Events, programs, and activities create vibrancy, celebrate our culture, and bring people together. We all walk together on Kurna country.

We partner with local community and sporting groups to progress community priorities and strengthen community capability by providing space, opportunity and support for individuals, groups and organisations seeking to enrich community life.

Engaging with our community and other stakeholders to understand and advocate for local needs and aspirations is integral to all that we do. Wherever possible, we work with others to co-create better outcomes and solutions.

We work closely with and advocate our community's local needs to federal and state agencies who provide healthcare, education, policing, social security, emergency services and crisis support. Our community are connected to these services, and we provide complementary programs and activities that address local needs and interests.

We are responsible for ensuring that our regulatory services officers administer local laws and help our community feel safe, manage finite resources (like parking), and ensure that our food businesses are safe, behaviours are respectful, and our animals are well cared for.

GOAL

Our City offers an excellent quality of life and supports all people to thrive.

OBJECTIVES

- 1 We foster a community where all people can feel safe, welcome, and included.
- 2 We embrace and celebrate the history, heritage, and identity of our people, places, and Country.
- 3 We support and encourage all people to be healthy, active, and socially connected.
- 4 We foster creativity, cultural expression, and learning.
- 5 We provide meaningful opportunities for people to participate in community and civic life.

THE MEASURES AND TARGETS WE WILL DEVELOP

- Community impact and satisfaction with our services and programs.
- Community health, wellbeing, and quality of life.
- Perceptions of liveability and neighbourhood safety.
- Visitors to our libraries, community centres, museum, and events.
- Digital access and inclusion.
- Formal and informal volunteer participation.
- Voter participation in Council elections.
- Participation in Council's community engagement opportunities.
- Civic facilities are contemporary and meet community expectations.
- Services meet the changing needs of our community.

HOW OUR COMMUNITY CAN HELP ACHIEVE SHARED GOALS

- Vote in local governments elections (if eligible).
- Join or volunteer with Council, a local group, club, or organisation.
- Apply for a community grant or get involved in a community project.
- Give us feedback about our services, programs, and facilities.
- Participate in Council engagement and consultation processes.
- Attend local events, exhibitions, and performances.
- Use our cultural, recreational, and civic facilities.
- Be a responsible pet owner.
- Nominate to be on Council, a Council committee, or get involved with a Council initiative.



ENVIRONMENT

GREEN AND SUSTAINABLE

By 2050...

The City of Unley is recognised as a green and sustainable city. We are leaders in climate governance and environmental management, driving initiatives to expand our urban forest, improve water management and increase biodiversity. Greening and sustainability considerations are embedded in everything we do.

Our City is now cooler, and greener. We are carbon neutral in our operations and keep pushing ourselves by regularly monitoring and stretching our Council and community emissions reduction targets. Our City is more resilient, and well-prepared to respond to and recover from extreme weather events.



We are responsible for kerbside waste collection and offer a waste collection service that minimises residual waste to landfill. We provide education and resources to the community to assist them to reduce waste and increase recycling and composting. Council embeds circular economy principles in its operations to maximise sustainable resource recovery.

Pursuing, supporting, and creating a sustainable environment is a shared responsibility between the City of Unley, State Government, and our community.

Our community co-leads action to achieve our full environmental potential and where our environmental ambitions are constrained by Government policy settings and regulatory tools, we advocate for change to drive greener and more sustainable outcomes.

GOAL

Our City is a progressive and innovative leader in sustainability and climate resilience.

OBJECTIVES

- 1 We lead by example and innovate to make our City greener, cooler, and more biodiverse.
- 2 We lead, promote, and incentivise local action on a carbon neutral and climate resilient future.
- 3 We maximise sustainable resource recovery and advance a circular economy through innovation and technology.
- 4 We seek nature-positive outcomes in the management of our natural resources.
- 5 We partner, facilitate and advocate to overcome constraints and achieve our environmental ambitions.

THE MEASURES AND TARGETS WE WILL DEVELOP

- Tree canopy cover.
- Urban cooling.
- Diversity of flora and fauna species across our City.
- Carbon emissions.
- Recovery of resources from all waste streams.
- Circular procurement (buying / using products made of recycled materials).
- Capture and reuse of water resources.
- Impact of our partnerships and advocacy.
- Environmental performance of our buildings and infrastructure.

HOW OUR COMMUNITY CAN HELP ACHIEVE SHARED GOALS

- Plant a new tree or garden and retain existing ones.
- Join a local environmental group.
- Stay informed about and model good environmental practices.
- Reduce your household carbon footprint.
- Keep our environment clean.
- Buy and use environmentally friendly products and materials.
- Undertake a local environmental project.
- Reduce, reuse, and recycle.
- Choose alternative transport modes, such as public transport, ride share, walking, and cycling.
- When renovating, extending, or building, choose green star outcomes that address key environmental issues of carbon footprint, water saving measures, the impact of materials, and retention of trees.





ECONOMY

INNOVATIVE AND PROSPEROUS

The City of Unley enhances innovation and prosperity through targeted economic development strategies that recognise Unley as a great place to do business, work, visit and invest.

While Council cannot directly deliver economic outcomes for businesses and investors, we partner, advocate, and facilitate to enhance and leverage our city's distinctive features and economic advantages.

Council is an innovator and place maker. Our lifestyle precincts are enticing for year-round enjoyment through activation, public realm improvements, ease of access, use of smart technology and quality infrastructure. Through strategic property investments and facilitating entrepreneurship, people will live and participate in the prosperity of our city. Innovation hubs attract emerging industries, create high value jobs, and diversify our economy.

Our services, facilities and infrastructure attract and support population growth, while preserving the amenity and lifestyle our community currently enjoys.

We support events, festivals and a business mix that creates economic vitality, vibrancy and builds our reputation as a great place to visit and live.

Home-based businesses, to major corporations with a global footprint, choose Unley as their home. Federal and State Government programs and services are leveraged to support our business community to stay and grow. Local services meet the varied needs such as advisory and mentoring services, entrepreneurial programs, co-working spaces, networking initiatives, and supporting business groups and associations.

GOAL

Our City is a unique and vibrant destination that attracts and retains a diverse mix of businesses, industries, and opportunities.

OBJECTIVES

- 1 We model and enable innovation and entrepreneurship to grow our economy, create jobs and serve our community.
- 2 We generate vibrancy and economic vitality by activating and connecting thriving business precincts and innovation hubs throughout our City.
- 3 We enhance and promote the local characteristics within our City that make us a desirable and exciting place to live, work, visit, invest and do business.
- 4 We create partnerships, collaborate with others, and embrace new ideas to attract investment and enrich our City.
- 5 We drive strong economic, cultural, environmental, and social outcomes through strategic investments in property, technology, facilities, and infrastructure.

THE MEASURES AND TARGETS WE WILL DEVELOP

- Business satisfaction with our programs, services, and initiatives.
- Overall economic output and jobs.
- Population growth.
- Third-party investments in Unley projects.
- Occupancy of commercial precincts.
- Business start-ups and innovation hubs.
- Business retention rate.
- Business and industry diversity.
- Night-time economy.
- Processing times for Council approvals and permits.

HOW OUR COMMUNITY CAN HELP ACHIEVE SHARED GOALS

- Support local businesses and service providers.
- Employ local people.
- Promote our City as a great place to live, work, shop, and visit.
- Start a business within the City of Unley.
- Invest in or partner with the City of Unley.



PLACES AND SPACES

CONNECTED, ACCESSIBLE AND VIBRANT

Our places and spaces are a part of our everyday life and play a central role in achieving many of our community, environmental and economic objectives.

We design and activate welcoming and vibrant public spaces that celebrate community and connection, inviting people of all ages and backgrounds to come together, explore, and enjoy the unique character of our City, transforming these spaces into places.

Our local roads, footpaths, open spaces, playgrounds, bike paths and sports grounds are safe and connected.

Our civic assets are built, maintained, and renewed, meeting the growing and changing needs of our community. Our civic assets showcase excellence in design and environmental performance.

Our open spaces are much loved community assets. We protect and expand our open spaces to meet our community's needs. Everyone is within an easy walking distance of quality public green space.

The State Government is responsible for some of the larger infrastructure in our city, such as main roads and public transport. We advocate on behalf of the community to seek improvements to these services.

We lead active transport in South Australia. Our streets are places for people and designed to balance the needs of mobility, leisure, and amenity to provide access, safety, and comfort. With more people walking, cycling, or using alternative transport, we have less traffic on our roads and less demand for parking.

Development is of the highest quality to provide housing choices for our diverse community, while maintaining our amenity and character. We make representations to the State Government for planning and design rules that reinforce our character and heritage and enhance our environment.

Population growth and desirable development outcomes are managed by careful planning to retain jobs, provide a diverse housing offer, and relieve housing affordability pressures. Design innovation, new types of housing, and aligning growth with investment will ensure a progressive City that respects our past and embraces our future.

GOAL

Our City is well-planned and has great places and spaces that are designed, built, maintained, and activated to create a connected and vibrant community.

OBJECTIVES

- 1 We invest in, revitalise, and expand our open spaces, recreation facilities and infrastructure to meet the needs of current and future communities and climates.
- 2 We create and activate welcoming public spaces for all people to deliver memorable experiences that inspire connection, foster a strong sense of place, and strengthen our City's identity whilst enhancing its unique brand.
- 3 We design our streets with people in mind to increase accessibility, active transport, and multi-modal transport options.
- 4 We plan for future population growth with a City Masterplan that guides innovative and well-designed housing and development in the right places.
- 5 We amplify the voice of our community by advocating for policies, partnerships, and funding that will enhance, future proof and attract investment in our places and spaces.

THE MEASURES AND TARGETS WE WILL DEVELOP

- A minimum open space per person target.
- Housing supply, choice, and diversity.
- Population growth.
- Retention of our local heritage and character.
- Satisfaction with our places and spaces.
- Provision of open space in areas without.
- Accessible local streets.
- Modes of active transport used in the City.
- Asset management.
- Advocacy and grant wins.

HOW OUR COMMUNITY CAN HELP ACHIEVE SHARED GOALS

- Walk or cycle for local trips if possible.
- Choose public transport or ride share if possible.
- Report hazards and tell us about things that need fixing in our City.
- Apply for a conservation grant to help take care of your heritage / character building.
- Enjoy our public spaces and places.
- Participate in public consultations that shape our City.



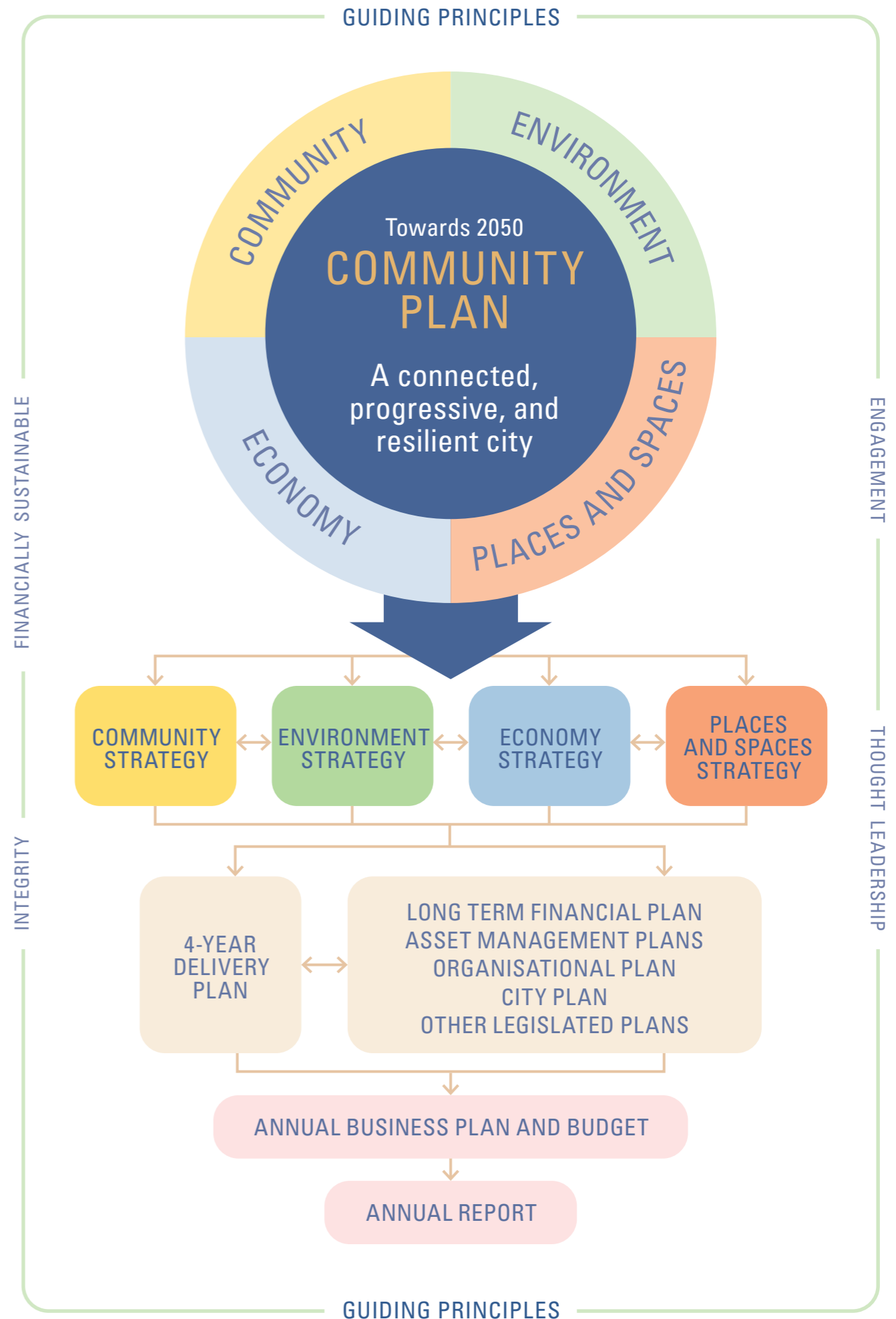
OUR STRATEGIC MANAGEMENT FRAMEWORK

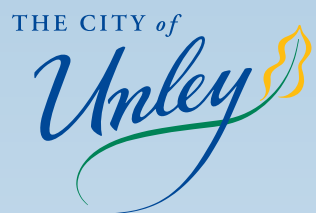
Preparing this Community Plan is our first step in moving our City and our community *Towards 2050*.

We will continue working with our community and stakeholders over the coming years to develop the detailed strategies, action plans, targets, and measures to achieve our Vision.

Our long, medium, and short-term planning and reporting processes are outlined in our Strategic Management Framework.

We will continue working with our community and stakeholders.





CIVIC CENTRE

181 Unley Road
Unley, South Australia 5061

Postal PO Box 1
Unley, South Australia 5061

T (08) 8372 5111

E pobox1@unley.sa.gov.au

W unley.sa.gov.au

