

HIGHGATE VILLAGE STREETScape UPGRADE

DESIGN CONCEPT

City of Unley will be undertaking asset renewal works to upgrade Highgate Village on Fullarton Road in mid 2025. This includes new paving and street furniture with more tree planting and garden beds.

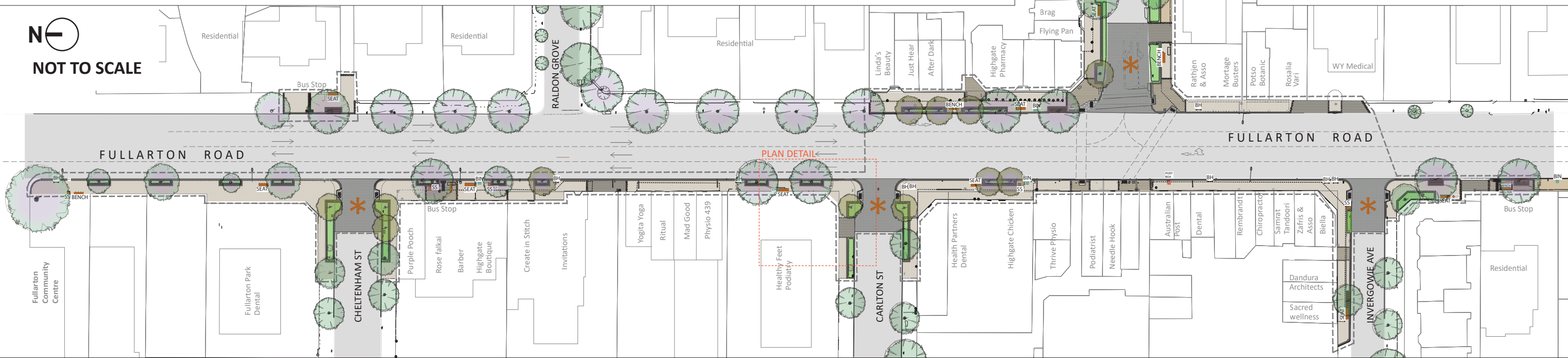
The side street entries at Cheltenham and Carlton Street and Ferguson Avenue will have paved road thresholds and improved pedestrian access.

The paving and street furniture suite is a contemporary design with earthy colours combined with flowering native and indigenous plants to reflect the character of the nearby Adelaide Hills.

LEGEND

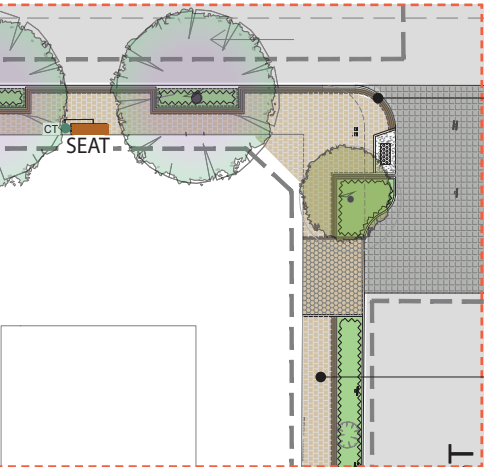
- Scope of Work
- Garden Bed
- New Seat / Bench
- SS Single Seat
- Brick Edge Paving
- New Paving
- BH - Bike Hoop
- BIN - Rubbish Bin
- ✱ Improved Pedestrian Amenity/ Paved threshold
- New Trees
- New Jacaranda trees
- Existing Jacaranda Trees
- Existing Trees

For further inquiries, please call on 8372 5111 or email citydesign@unley.sa.gov.au



PLAN

PLAN DETAIL



Typical paving layout in detail

PAVING & STREET FURNITURE:



New pavers and street furniture suite

NEW PLANTING PALETTE:



A sample of the plant species selected for the garden bed planting